

CD-Audio Help

To select a help category, position the mouse pointer on the category. When the pointer becomes a hand, click the mouse button. If you are using the keyboard, press Tab to highlight the category then press Enter. For more information on using Help, press F1.



CD-Audio screen layout



List of features



Step by step instructions



Keyboard shortcuts

CD-Audio Tour



To read about any object on this screen, position the mouse pointer on the object and click the mouse button. Or, use the Tab keys to highlight the object then press Enter.

A window containing the information appears. To remove the window after reading the information, click anywhere on the screen or press Enter.

CD-Audio Features

Configure menu

Drive

Color

Startup

System menu

Iconic window

Font

Play window

LED panel

Play panel

Track name

Track panel

Search panel

Volume panel

Options panel

Time button

Disk Info display

Play mode display

Options button

Program window

Artist title

Disk title

Track list

Track title

Play mode panel

Repeat panel

View tracklist

Save tracklist

Using CD-Audio

These topics provide step-by-step instructions for using CD-Audio.

[Changing the CD-Audio color scheme](#)

[Choosing tracks to play](#)

[Displaying track or disk play time](#)

[Displaying track information in the Track list](#)

[Editing the play list](#)

[Ejecting the CD](#)

[Entering artist, disk, and track titles](#)

[Excluding tracks from the play list](#)

[Pausing the music](#)

[Playing a CD](#)

[Playing tracks in random order](#)

[Programming tracks to play](#)

[Repeating track or CD](#)

[Restoring tracks to the play list](#)

[Selecting a CD-ROM drive](#)

[Selecting a play mode](#)

[Selecting fonts for the LED and text](#)

[Selecting shuffle mode](#)

[Selecting program mode](#)

[Setting up a startup configuration](#)

[Stopping the music](#)

CD-Audio Keyboard Shortcuts

[Play window shortcuts](#)

[Program window shortcuts](#)

[Alphabetical list](#)

Configure Menu



Use the Configure menu to select another drive on which to play the CD, to create a new color scheme for the CD-Audio windows, to change the font in the LED and text display, and to set the startup configuration for the program.

Drive



CD-Audio controls only the currently selected CD-ROM drive. If you have more than one CD-ROM drive on your system, use this option to select a drive to play your CD. You can select a drive by highlighting its drive letter and clicking Select.

Note: If you have a CD-ROM changer and want to access all the slots, you must assign a different drive letter to each slot. Then use the drive letter to refer to the slot.

Color



Use this option in the Configure menu to change the CD-Audio window colors. The sample CD-Audio window lets you see the new color scheme as you create it.

Choose Color Panel



Use this color palette to choose a color for each of these elements of the CD-Audio window:

- * Window background
- * LED display text
- * Window text
- * Edit/List text
- * Edit/List background

Sample window



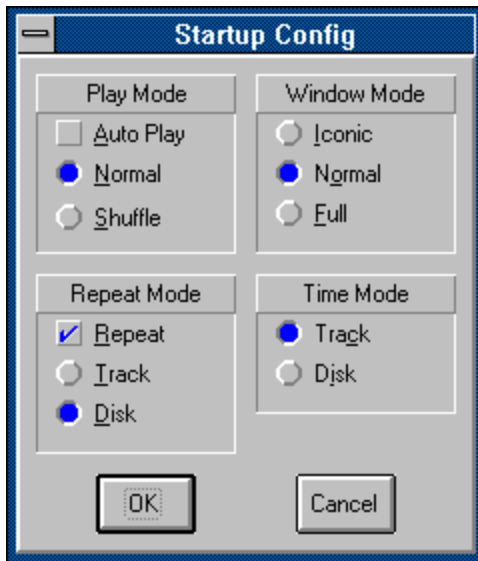
This area displays the current color scheme. New colors appear immediately in this window as you select them, showing you the color scheme for the entire CD-Audio window as you create it.

Font



The Font option allows you to choose the font for the LED and text display in the CD-Audio window.

Startup



The Startup option allows you to set startup default options.

Play mode



As part of your startup configuration, you can indicate how the tracks should be played when you first start the CD. The following options are available: Auto Play, Normal, and Shuffle.

Auto Play

With Auto Play selected, CD-Audio will start playing as soon as you insert a CD into the CD-ROM drive. When you select Auto Play, you must also select either Normal or Shuffle

Normal

Select Normal mode to play the tracks one after the other as they occur on the CD.

Shuffle

Select Shuffle to let CD-Audio shuffle the tracks and play them in random sequence.

Note: Program mode is not available as part of the startup configuration.

Window



This option lets you choose how the CD-Audio window will appear at startup. Choose one of the following: Iconic, Play, or Full.

Iconic

The Iconic option displays CD-Audio as an icon. While CD-Audio is iconized, you can play the CD by using either the options in the System menu or the Play window keyboard shortcuts.

Play

If you choose Play, you will see the CD-Audio Play window.

Full

If you choose Full, you will see both the Play window and the Program window.

Repeat



Lets you specify whether or not you want a single track or the entire CD to be repeated. Select Repeat to have the track or the whole CD repeated. With Repeat selected, you must then select either **Track** or **Disk** to indicate the repeat cycle.

Time Mode



CD-Audio can display the elapsed and remaining play time either for the track that is currently playing, or for the entire CD. The play time is displayed in the LED panel in the Play window.

Play Window



This window contains all the controls you need to play the CD in normal mode. It also contains the Options button that gives you access to the Program window.

Iconic window

The CD-Audio icon displays the track that is currently selected or playing, and the length of time the CD has been playing.

LED panel



The LED panel shows the current drive status (Play, Pause, Stop, or Wait), the current track number, and the time display. You can use the Font option in the Configure menu to change the font in the LED panel.

Play panel



The Play panel allows you to start, stop, pause, resume, and eject the CD.

Track panel



The Track panel lets you skip tracks to select a track to listen to.

Search panel



Use the Search panel to move forward or backward within a track.

Volume panel



Use this panel to turn the drive volume on and off.

The left and right buttons on the Volume panel control the audio channels independently of each other. The middle button toggles both channels on or off simultaneously.

Note: The CD-Audio Volume panel is grayed out if your CD-ROM drive does not provide volume control.

Options panel



This panel contains the Time button, disk info display, play mode display, and Options button.

Program Window

Artist Title			
Disk Title			
01	01	06:49	Track 01
02	02	04:52	Track 02
03	03	04:22	Track 03
04	04	04:24	Track 04
05	05	05:34	Track 05
06	06	04:11	Track 06
07	07	04:25	Track 07
08	08	06:16	Track 08
09	09	04:00	Track 09
10	10	03:39	Track 10
Track 01			
Normal Shuffle Program			View
Disk			Save

With the Program window open, you can select specific tracks to play; assign artist, disk and track titles; and edit the playlist by excluding and restoring tracks.

Track list

01	30:28	Artshow Data	
02	02:05	Handel - Opus 6 #1	
03	00:49	Handel - Opus 6 #2	
04	01:40	Handel - Opus 6 #3	Selected track
05	00:59	Handel - Opus 6 #4	
06	02:48	Mondo Mozart - Arrange based on Mozart	
07	01:48	Bach - Brandenburg Con 2 (1st movement)	
08	02:31	Bach - Brandenburg Con 2 (2nd movement)	
09	01:18	Bach - Brandenburg Con 2 (3rd movement)	
10	01:27	Mirth and Merriment	

Diagram labels:
Track number: points to the first column.
Program number: points to the second column.
Track time: points to the third column.
Track type: points to the fourth column.
Track name: points to the fifth column.
Selected track: points to the sixth column.

The Track list, which appears in the Program window, automatically displays the tracks as they appear on the CD.

Note: The tracks always appear in the same sequence in the track list regardless of the Play mode you select.

Using the Track list, you can display additional information about the tracks on the CD; select a single track or program a selection of tracks to listen to; assign names to the tracks; and edit the play list.

Play mode panel



Use the Play mode panel to specify the sequence in which tracks are to be played (Normal, Shuffle, or Program). Click these buttons for more information about each mode.

Repeat panel



The Repeat panel lets you replay the selected track or the entire CD. Click these buttons for more information.

View tracklist



Click **View** in the Program window to select track information for display in the Track list.

Play window keyboard shortcuts

Use these keyboard shortcuts to play your CD. You can also use them to play the CD while CD-Audio is displayed in Iconic mode.

Press these keys	To do this
Ctrl+p	Start playing from the beginning of the current track.
Ctrl+u	Pause the music. To resume playing, enter Ctrl+u again.
Ctrl+s	Stop playing.
Ctrl+e	Stop playing, and eject the CD if the drive can do so.
Alt+left arrow	Play the previous track on the CD.
Ctrl+c	Move forward from track to track, playing the first 10 seconds of each track.
Alt+right arrow	Advance to the next track on the CD.
Ctrl+t	Toggle between the track or the CD playing time display.
Ctrl+o	Toggle the Program window on and off.

Program window keyboard shortcuts

Use these keyboard shortcuts when you are in the Program window.

Note: An asterisk in the first column indicates that the keyboard shortcut can also be used while CD-Audio is displayed as an application icon.

Press these keys	To do this
Ctrl+a	Toggle the Repeat mode on and off.
Ctrl+i	Toggle between track and CD replay.
*Ctrl+h	Shuffle the play sequence to play in random order.
Ctrl+g	Enter Program mode.
Ctrl+l	Clear the programmed track selections.
*Ctrl+n	Cancel the Program or Shuffle mode and return to normal play.
Ctrl+r	Restore all the tracks you excluded from the play list.
*Ctrl+w	Open the View tracklist window.
Ctrl+v	Save the artist, disk, and track titles that you entered in the Program window.
Alt+Insert	In Normal or Shuffle mode, restore tracks that were excluded from the play list.
	In Program mode, add the current track to the program list.
Alt+Delete	In Normal or shuffle mode, exclude tracks from the play list.
	In Program mode, delete the current track from the program list.
Tab	Move the cursor between these areas of the Program window: Artist title, Disk title, Track list, and Track title.

Alphabetical keyboard shortcuts

Press these keys	To do this
Alt+left arrow	Play the previous track on the CD.
Alt+right arrow	Advance to the next track on the CD.
Alt+Insert	In Normal or Shuffle mode, restore tracks that were excluded from the play list.
	In Program mode, add the current track to the program list.
Alt+Delete	In Normal or shuffle mode, exclude tracks from the play list.
	In Program mode, delete the current track from the program list.

Ctrl+h	Shuffle the play sequence to play in random order.
Ctrl+i	Toggle between track and CD replay.
Ctrl+l	Clear the programmed selections.
Ctrl+n	Cancel the Program and Shuffle modes and return to normal play.
Ctrl+o	Toggle the Program window on and off.
Ctrl+p	Start playing from the beginning of the current track.
Ctrl+r	Restore all the tracks you excluded from the play list.
Ctrl+s	Stop playing.
Ctrl+t	Toggle between the track or the CD playing time display.
Ctrl+u	Pause the music. To resume playing, press Ctrl+u again.
Ctrl+v	Save the artist, disk, and track titles that you entered in the Program window.
Ctrl+w	Open the View tracklist window.
Tab	Move the cursor between these areas of the Program window: Artist title, Disk title, Track list, and Track title.
F5	Start playing from the beginning of the current track.
F6	Pause the music. To resume playing, press F6 again.
F7	Stop playing.
F8	Stop playing, and eject the disk if the drive can do so.

Change window color scheme

CD-Audio lets you create your own color scheme for the CD-Audio window. You can select a different color for each of the following screen areas: window background, window text, LED text, Track list background, and Track list text.

•To create a new color scheme

- 1 Select Configure in the CD-Audio window.
The Configure menu appears.
- 2 Select the Color option in the Configure menu.
The Color Control dialog box appears.
- 3 Select the window element you want to give a new color.
The standard Windows color palette appears.
- 4 Click the color for the display.
The sample CD-Audio window reflects the color you selected.
- 5 Repeat steps 3 and 4 until you have a satisfactory color scheme.
If you wish, you can select the Default button to change the color scheme to the default setting.
- 6 Click OK to save the color scheme.
The colors you selected appear immediately in the CD-Audio windows.

Change font for LED and text display

You can change the font in the LED display and in the text in the CD-Audio window.

•To select a new font for the LED or text display

- 1 Select Configure in the CD-Audio window.
The Configure menu appears.
- 2 Select the Font option in the Configure menu.
- 3 Select LED to change the font for the LED display, or TEXT to change the font for the text.
The standard Windows font dialog box appears.
- 4 Select the font for the display.
- 5 Click OK to save the new font.
The font you selected appears immediately in the CD-Audio windows.

Choose tracks to play

With CD-Audio, you can choose tracks to listen to by using the controls in the [Track panel](#). Or you can choose tracks by double clicking the track number or name in the [Track list](#) if the Play mode is [Normal](#) or [Shuffle](#).

To choose a track using the controls in the Track panel

- * Click  or press Alt+left arrow to move back to the previous track on the CD.
- * Click  or press Ctrl+c to move forward from track to track and play the first 10 seconds of each track. When you find a track you want to listen to, click  or press Ctrl+c again to play it from the beginning.
- * Click  or press Alt+right arrow to advance to the next track on the CD.

To choose a track from the Track list

- 1 Open the [Program window](#) (if it is not already open), by clicking  or pressing Ctrl+o.
- 2 Double click the track you want to listen to in the Track list.
The current track name will appear in the [Play panel](#) below the play control buttons.

Related topics

[Editing the play list](#)

[Playing a CD](#)


[Programming tracks](#)

[Selecting a play mode](#)

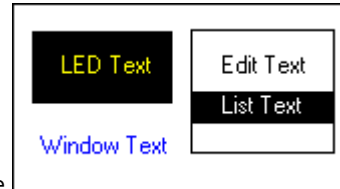
Display track or disk play time

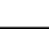
The LED panel in the CD-Audio Play window displays the headings "Elapsed" and "Remain". "Elapsed" indicates how long the track or disk has been playing. "Remain" indicates how much play time remains. You can display the play time for either the track or the disk by using the Time button. The default time mode state (track or disk) is determined by your selection in the Startup option in the Configure menu.

•Using the Time button

- 1 Click  or press Ctrl+t to select either Disk or Track.

The Time button toggles the time display for the track and disk.



Your selection (track or disk) will be displayed above the  button, and the play time for your selection will be displayed in the LED panel.

Display track information in the Track list

The Track list in the Program window can display a variety of information about the tracks on the CD. To choose which pieces of information you want displayed, click View in the Program window and select the desired options in the View Options check box that appears.

To display specific information



- 1 Open the Program window, if it is not already open, by clicking or pressing Ctrl+o.



- 2 Click  or press Ctrl+w in the Program window to open the View Options check box.
- 3 Select the items you want to display by clicking each item until an x appears beside it, or by using the Tab and cursor keys to highlight the item then pressing the spacebar.
- 4 Select OK.

The information you selected is displayed in the Track list box.

Related topics

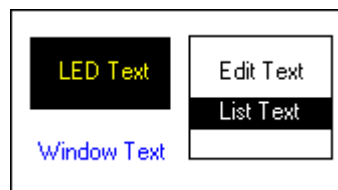
Entering artist, disk, and track titles

Edit the play list

If there is a track on the CD that you prefer not to listen to, you can exclude it from the play list so that CD-Audio will skip the track while playing or selecting a track. This information can be saved in a database file along with the disk and track names, so the same track(s) will be excluded each time you play the CD.

If you decide later that you do want to listen to the track after all, you can re-insert it into the play list.

•To exclude a track from the play list



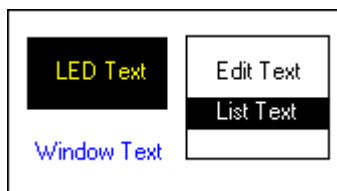
- 1 Open the Program window, if it is not already open, by clicking or pressing Ctrl+o.
- 2 Highlight a track in the Track list by clicking anywhere on the track information, or by using the Tab and cursor keys.
- 3 Press Alt+Del.
The track number in the first column of the Track list box is replaced by the ** symbol. Unless you restore the track to the playlist, it will not be played again.

•To re-insert a track into the play list

- 1 Open the Program window, if it is not already open, by clicking



- or pressing Ctrl+o.
- 2 Highlight the excluded track in the Track list by clicking anywhere on the track information or by using the Tab and cursor keys.
- 3 Press Alt+Ins.



The track is re-inserted in the play list, and the ** symbol in the first column in the Track list reverts to the track number. You can now play the re-inserted track as you would any other track.

•To restore all excluded tracks to the play list

- 1 Select Normal or Shuffle mode.
- 2 Press Ctrl+r.
All the tracks will once again be available to be played.

Related topics

[Choosing tracks to play](#)

Enter artist, disk, and track titles

You can enter titles for the artist and disk, as well as for the individual tracks on the CD. Then you can save the titles in a database file. Once the titles are saved, CD-Audio will recognize the CD each time you insert the CD in a drive, and will display the titles automatically.

To enter artist, disk, and track titles, the Program window must be open. You can open it by



clicking or pressing Ctrl+o.

•To enter the artist title

- 1 In the Program window, click Artist title, or highlight it using the Tab key.
- 2 Type in the artist title.
The title you type in will appear in place of "Artist title".

•To enter the disk title

- 1 In the Program window, click Disk title, or highlight it using the Tab key.
- 2 Type in the disk title.
The title you type in will appear in place of "Disk title".

•To enter track names

- 1 With the Program window open, highlight a track in the Track list by clicking the track information or by using the Tab and cursor keys.
- 2 Type in the track name.
When you press Enter, CD-Audio will automatically highlight the next track.
- 3 Repeat steps 1 and 2 for each track you want to name.
The track names will appear in the last column of the Track list.

•To save the artist,disk, and track titles

- * In the Program window, click **Save**. The titles are saved in a database file and will be displayed each time you play the CD.

Related topics

Displaying track information in the Track list

Play tracks on a CD

You can play a CD in several different ways using either a mouse or keyboard. Or you can set the startup configuration to let CD-Audio play the CD each time it is inserted in the CD-ROM drive and the program started.

Playing a CD in Play or Full window mode

•To start playing

- * Click  in the Play panel, or press Ctrl+p.

The selected track, or the track indicated by the play mode you selected in your startup configuration, will be played.

- * Double click a track in the [Track list](#).
The track will be played from the beginning.

•To pause the music

- * Click  in the Play panel, or press Ctrl+u. Click  or press Ctrl+u again to resume playing.

•To stop playing

- * Click  in the Play panel, or press Ctrl+s.

•To stop playing and eject the disk

- * If the drive you are using can eject the disk, click  in the Play panel or press Ctrl+e to stop the music and eject the disk.

Playing a CD in Iconized mode

While CD-Audio is displayed in [iconized](#) mode, you can play the CD using either the [keyboard shortcuts](#) or the options in the [System menu](#).

- * To use the System menu, click once on the CD-Audio icon. The System menu appears, showing the Play, Pause, and Stop options.

Playing a CD automatically at startup

- * Using the Startup option in the Configure menu, you can configure CD-Audio to play a CD at startup or each time a CD is inserted in the drive (see [Setting up a startup configuration](#)).

To search within a track

You can move backward and forward within a track using the [Search panel](#). The Search controls are active only while the drive is playing a CD.

- * Click  to skip back through the track in 10-second jumps, one jump each time you click the mouse button. For a series of jumps, hold down the mouse button.
- * Click  to skip forward through the track in 10-second jumps, one jump for each click of the mouse button. Hold down the mouse button for a series of jumps.
- * Click  to display the [Search Control dialog box](#). Then use the scroll bar in the dialog box to tune in your musical selection.

Related topics

[Choosing tracks to play](#)

[Editing the play list](#)

[Selecting a play mode](#)

Program tracks to play

Using the [Track list](#), you can program a selection of tracks to listen to, in the sequence in which you want to hear them.

•To program a selection of tracks in the play list



- 1 Open the Program window, if it is not already open, by clicking or pressing Ctrl+o.
- 2 Click **Program** in the [Play mode panel](#), or press Ctrl+g.
- 3 In the Track list, highlight the first track you want to hear by clicking it or by using the Tab and cursor keys.
- 4 Double click the track or press Alt+Ins to add the track to your programmed play list.
The number in the second column of the track list will reflect the sequence in which you select the track. This is also the sequence in which the track will be played.
- 5 Repeat steps 3 and 4 for each track you want to listen to.
- 6 If you wish to delete a track you have selected, double click the track or press Alt+Del.
The program number column will display the -- symbol.
- 7 When you have made all your selections, press Play.
The tracks you selected will be played in the sequence in which you selected them.

•To clear program selections from the play list

- * Select Normal or Shuffle mode.
The mode you select will take effect immediately.
- * Press Ctrl+I.
This will clear all the programmed selections but leave you in program mode.

Related topics

[Editing the play list](#)

[Playing a CD](#)

[Selecting a play mode](#)

Repeat track or CD play

CD-Audio allows you to play a single track or entire CD repeatedly. The Repeat option works in all Play modes.

You can repeat the CD or track using the Repeat panel in the Program window.

•Using the Repeat panel



- 1 Open the Program window, if it is not already open, by clicking  or pressing Ctrl+o.
- 2 Click  or press Ctrl+a to toggle the Repeat mode on.
- 3 With Repeat mode on, click  or press Ctrl+i to select track or disk replay.

Related topics

[Choosing tracks to play](#)

[Editing the play list](#)

[Selecting a play mode](#)

Select a CD-ROM drive

CD-Audio allows you to switch control to another drive if you have access to more than one CD-ROM drive.

•To select a CD-ROM drive

- 1 Select Configure in the CD-Audio window.
The Configure menu appears.
- 2 Select Drive in the Configure menu.
The CD Drive option appears.
- 3 Select the new drive letter by clicking  and scrolling through the list to the drive letter you want.
- 4 Click the Select button.
The drive you selected will be the active drive.

Select a play mode

You can listen to the CD one track after the other from the beginning or select individual tracks one at a time (Normal mode). You can let CD-Audio shuffle the tracks and play them in random order (Shuffle mode). Or you can program a selection of tracks for your listening pleasure (Program mode).

•To choose a play mode



- 1 Open the Program window, if it is not already open, by clicking or pressing Ctrl+o.
- 2 In the Play mode panel, click Normal, Shuffle, or Program; or press Ctrl+n for Normal mode, Ctrl+h for Shuffle mode, or ctrl+g for Program mode.
If you select Program mode, you must then select the tracks you want to hear (see Programming tracks to play).

Related topics

[Choosing tracks to play](#)

[Setting up a startup configuration](#)

Set startup configuration

This option determines how CD-Audio will operate when you start the program in Windows. You can choose how the tracks will be played, how the CD-Audio window will be displayed, whether the track or disk will be repeated, and whether the play time will be displayed for the track or for the disk.

•To choose a startup configuration

- 1 Select Configure in the CD-Audio window.
The Configure menu appears.
- 2 Select the Startup option in the Configure menu.
The Startup options appear. You can select the check boxes and option buttons by clicking them with a mouse, or by using the Tab and cursor keys to highlight them then pressing the spacebar.
- 3 In Play Mode, indicate how you want the tracks to be played.
- 4 In Window, indicate how you want the CD-Audio window displayed.
- 5 In Repeat, indicate if you want to have the track or disk repeated.
- 6 In Time Mode, indicate whether play time is to be displayed for the track or for the disk.
- 7 After making your selections, click OK.
The startup configuration you just selected will take effect next time you run CD-Audio.

Artist title

In the Artist title text box, you can enter the title of the artist, or any information that you want to associate with the disk. Then click Save to save the information you entered. The information will be displayed whenever you use CD-Audio to play the CD.

Disk info display

The number of tracks on the disk and the total playing time for the CD appear below



in the Play window.

Disk title

In the Disk title box, you can enter the title of the disk, or any information that you want to associate with the disk. Then click Save to save the information you entered. The information will be displayed whenever you use CD-Audio to play the CD.

Eject button



Stops playing, and ejects the disk if the drive can do so. The keyboard shortcut is **Ctrl+e**.

Full window



Full window displays both the Play and Program windows.

Iconic window

{bml icon.bmp}The CD-Audio icon displays the track that is currently selected or playing, and the length of time the CD has been playing. While CD-Audio is iconized, you can play a CD by using either the options in the System menu or the Play window keyboard shortcuts.

Current track

This number indicates the track that is playing or is currently selected.

Drive status

The drive status indicates the following four CD-ROM drive states:

- * Wait The drive is not ready, or there is no CD in the drive.
- * Play The drive is busy playing an audio CD
- * Pause The drive is in pause mode.
- * Stop The drive is ready to play the audio CD.

Time display

Displays the elapsed and remaining play time for the track that is currently playing, or for the entire CD. The play time is displayed in the LED panel in the Play window.

You can switch between the play time display for the track or disk by clicking the Time button in the Play window.

Normal



Plays tracks one after the other as they appear in the Track list. The keyboard shortcut is **Ctrl+n**.

Options button



Opens and closes the Program window. With the Program window open, you can enter titles for the tracks, artist and disk; program a selection of tracks; and edit the play list. The keyboard shortcut is **Ctrl+o**.

Pause button



Pauses the music. To continue playing, just click the button again. The keyboard shortcut is **Ctrl+u**.

Play button



Starts playing the current track. The keyboard shortcut is **Ctrl+p**.

Play mode display

The current play mode (Normal, Shuffle, or Program) appears below Disk info display in the Play window.

You can choose a play mode either as part of your startup configuration, or by clicking the appropriate button in the Play mode panel.

Play window



Program



Allows you to select tracks to play in a desired sequence. The keyboard shortcut is **Ctrl+g**.

Program window

Artist Title			
Disk Title			
01	01	06:49	Track 01
02	02	04:52	Track 02
03	03	04:22	Track 03
04	04	04:24	Track 04
05	05	05:34	Track 05
06	06	04:11	Track 06
07	07	04:25	Track 07
08	08	06:16	Track 08
09	09	04:00	Track 09
10	10	03:39	Track 10

Track 01

Normal	Shuffle	Program	View
↶	Disk	⏮	Save

Repeat button

Lets you to toggle the Repeat mode on and off. The button face indicates the current mode:



Repeat mode is on.



Repeat mode is off.

The keyboard shortcut is **Ctrl+a**.

Repeat cycle button



Toggles between a single track and entire disk repeat mode. The Repeat mode must be on. The keyboard shortcut is **Ctrl+i**.

Save button



Saves the track, artist, and disk information you entered in the Program window. The information, which is saved in a database, is retrieved and displayed automatically each time you insert the CD in the drive. The keyboard shortcut is **Ctrl+v**.

Search control



Displays the Search Control panel so you can fine tune your musical selection. Use the scroll bar to move to any point within the track. The elapsed and remaining time display above the scroll bar is updated as you move through the track.

Search backward button



Skips back through the track in 10-second jumps, one jump each time you click the mouse button. For a series of jumps, hold down the mouse button.

Search forward button



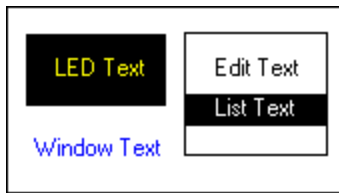
Skips forward through the track in 10-second jumps, one jump each time you click the mouse button. For a series of jumps, hold down the mouse button.

Shuffle



Shuffles the tracks in a random sequence. The keyboard shortcut is **Ctrl+h**.

Stop button



Stops playing. The keyboard shortcut is **Ctrl+s**.

System menu

A screenshot of a system menu for a CD-Audio window. The menu is displayed as a vertical list of options. At the top is a blue header bar with a white minus sign icon on the left. Below the header, the menu items are: 'Restore' (with a small 'R' underlined), 'Move' (with a small 'M' underlined), 'Minimize' (with a small 'M' underlined), 'Play' (with a small 'P' underlined), 'Pause' (with a small 'P' underlined), 'Stop' (with a small 'S' underlined), 'Close' (with a small 'C' underlined) and 'Alt+F4' to its right, and 'Switch To...' (with a small 'S' underlined) and 'Ctrl+Esc' to its right.

—	
<u>R</u> estore	
<u>M</u> ove	
<u>M</u> inimize	
<u>P</u> lay	
<u>P</u> ause	
<u>S</u> top	
<u>C</u> lose	Alt+F4
<u>S</u> witch To...	Ctrl+Esc

The System menu (also called the Control menu) is opened by clicking the control-menu box in the upper left corner of the CD-Audio window. The CD-Audio System menu contains the Play, Pause, and Stop options in addition to the Restore, Move, Minimize, Switch to..,and Close options.

Time button



Switches between the playing time display for the track and for the entire CD. The playing time is displayed in the LED panel, and the text above the Time button indicates whether the display is for the track or the disk. The keyboard shortcut is **Ctrl+t**.

Previous Track button



Moves back to the previous track on the CD. The keyboard shortcut is **Alt+left arrow**.

Track name display

Displays the name (number or title) of the track that is either selected or currently playing.

Track scan button



Skips forward from track to track, playing the first 10 seconds of each track. The keyboard shortcut is **Ctrl+c**.

Track title

You can use the Track title box to enter names for the tracks on the CD. With the Track update option selected in the View tracklist menu, you can enter track names in the Track title box without disturbing the audio play.

Next track button



Advances to the next track on the CD. The keyboard shortcut is **Alt+right arrow**.

Track name

Initially, all track names defaults to "Track *nn*". However, you can enter names for the tracks, then save them in a database file. The number (or the name) of the track that is currently selected or playing will be displayed in the Play panel.

This field can be turned off using the View track list.

Track number

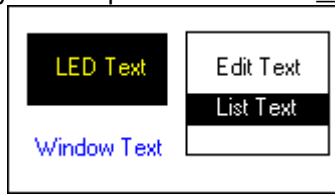
Each track found on a CD is assigned a track number in an ascending order, starting at one. The track number is always displayed in the Track list. If a track is a data track or is



excluded from the play list, the track number is replaced by the symbol.

Program number

The program number indicates the play list sequence. In the Program mode, tracks not



selected in the play list will display the symbol.

Selected track

The Track Update option in the View Options menu determines the status of the highlighted track in the Track list:

- * ON The track is currently playing.
- * OFF The track is selected in the Track title box and can be manipulated without affecting the track that is currently playing.

Track time

This field displays the length of each track in *mm:ss* format.

Track type

This field indicates each track to be either:

- *  data track.
- *  audio track.

Track name option

The Track name option toggles the track name field in the [Track list](#) on and off.

Program number option

The Program number option toggles the program number field in the Track list on and off.

Track time option

The Track time option toggles the track time field in the [Track list](#) on and off.

Track type option

The Track type option toggles the track type field in the [Track list](#) on and off.

Track update option

When the Track update option (in the View tracklist menu) is on, the track that is currently playing is highlighted in the Track list box. If you highlight another track, it will become the current track and will start playing.

When the Track update option is off, the track that is highlighted in the Track list appears in the Track title box. You can manipulate this track without affecting the track that is playing.

Left channel button

The button is used to toggle the left audio channel on and off. The button face indicates the current state:

- *  Volume on.
- *  Volume off.

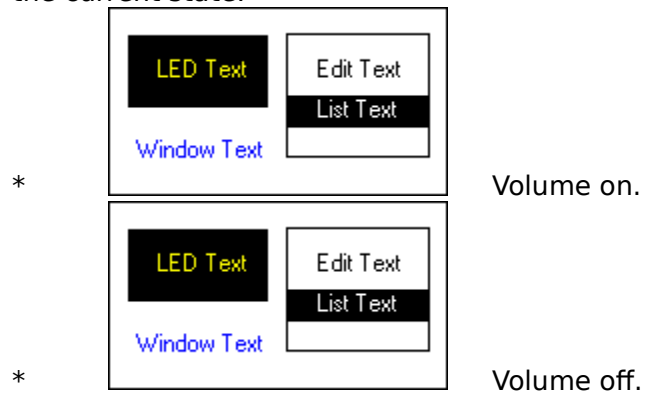
Audio channel button

The button is used to toggle both audio channels on and off at the same time. The button face indicates the current state:

- *  Both channels on
- *  Both channels off

Right channel button

The button is used to toggle the right audio channel on and off. The button face indicates the current state:



Color



Use this option in the Configure menu to change the CD-Audio window colors. The sample CD-Audio window lets you see the new color scheme as you create it.

Track list

01	30:28	Artshow Data	
02	02:05	Handel - Opus 6 #1	
03	00:49	Handel - Opus 6 #2	
04	01:40	Handel - Opus 6 #3	Selected track
05	00:59	Handel - Opus 6 #4	
06	02:48	Mondo Mozart - Arrange based on Mozart	
07	01:48	Bach - Brandenburg Con 2 (1st movement)	
08	02:31	Bach - Brandenburg Con 2 (2nd movement)	
09	01:18	Bach - Brandenburg Con 2 (3rd movement)	
10	01:27	Mirth and Merriment	

Annotations in the image:
- Track number: points to the first column.
- Program number: points to the first column.
- Track time: points to the second column.
- Track type: points to the third column.
- Track name: points to the fourth column.
- Selected track: points to the fourth column.

The Track list, which appears in the Program window, automatically displays the tracks as they appear on the CD.

Note: The tracks always appear in the same sequence in the track list regardless of the Play mode you select.

LED panel

The LED panel shows the current drive status (Play, Pause, Stop, or Wait), the current track number, and the time display.

View tracklist



Click **List Text** to select track information for display in the Track list.

